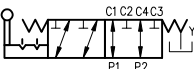

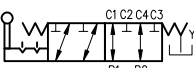

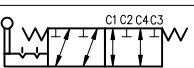

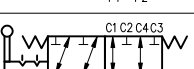

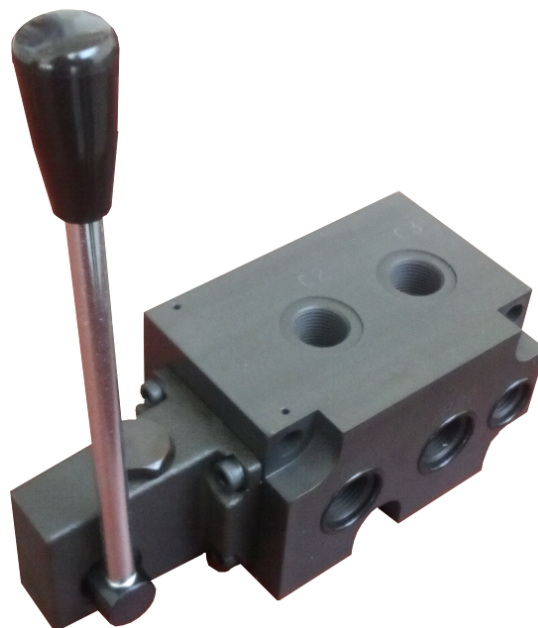


**GENERAL DESCRIPTION**

List: 62FDV06-7-Mar 2017

- ✓ 6/2- way flow diverter with manual operation
- ✓ Maximum control of hydraulic power
- ✓ Reliability and long life

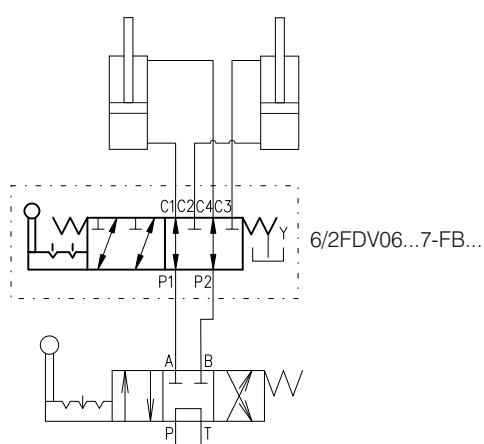
Symbol	Intermediate	Drainage
11A 		code "Y"- with drainage
12A 		code "Y"- with drainage
11A 		without drainage
12A 		without drainage



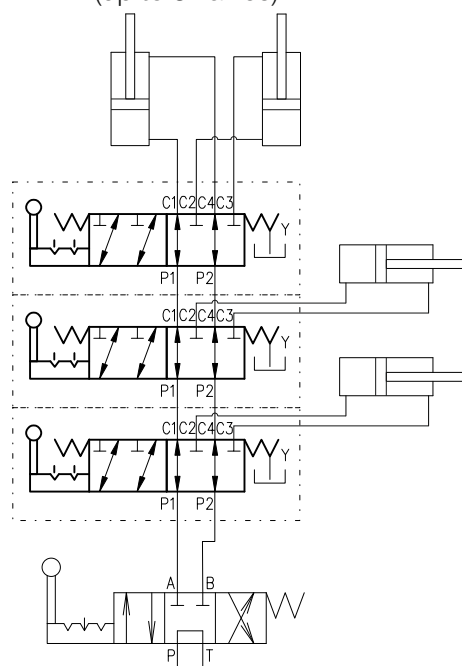
The 6/2FDV06-7... valve is manual operated flow diverter valve. It is often used to control the direction of flow for two or more double acting cylinders as shown in the connecting examples.

**CONNECTING EXAMPLES**

single connection  
(one valve)



stackable connection  
(up to 5 valves)



**ORDERING CODE**

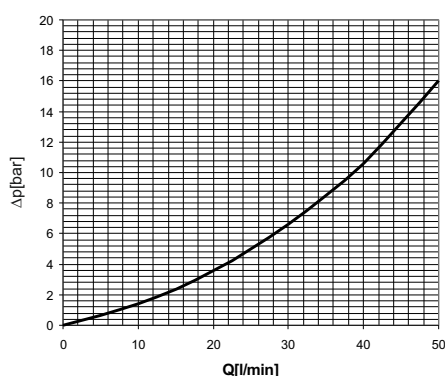
6/2	FDV	06	...	7	-	FB	...	...	...	...
6-way , 2-position					External drainage:					
Flow diverter					<b>omit</b> - without drainage					
Nominal size - NG6					<b>Y</b> - with drainage					
Functional symbol:					Connection threads:					
<b>11A</b>					<b>G38</b> - G3/8"					
<b>12A</b>					<b>G12</b> - G1/2"					
Type of control: - manual					Climatic executions:					
Modification					<b>N</b> - normal					
Detent:					<b>T</b> - tropical					
without detent - Omit										
with detent - <b>D</b>										

**TECHNICAL DATA**
**GENERAL**
**DATA**
**UNIT**
**VALUE/RANGE**

Installation position		optional
Max. ambient temperature	°C	-20...+50
Weight	kg	3,100
Lever angular movemet	°	19

**HYDRAULIC**

Max. pressure:	with drainage without drainage	MPa	31,5 21
Rated flow		l/min	50
Hydraulic fluid-mineral oil:			
-viscosity	mm <sup>2</sup> /s		10...800
-filtration degree	mm		0.025
-temperature	°C		-20...80

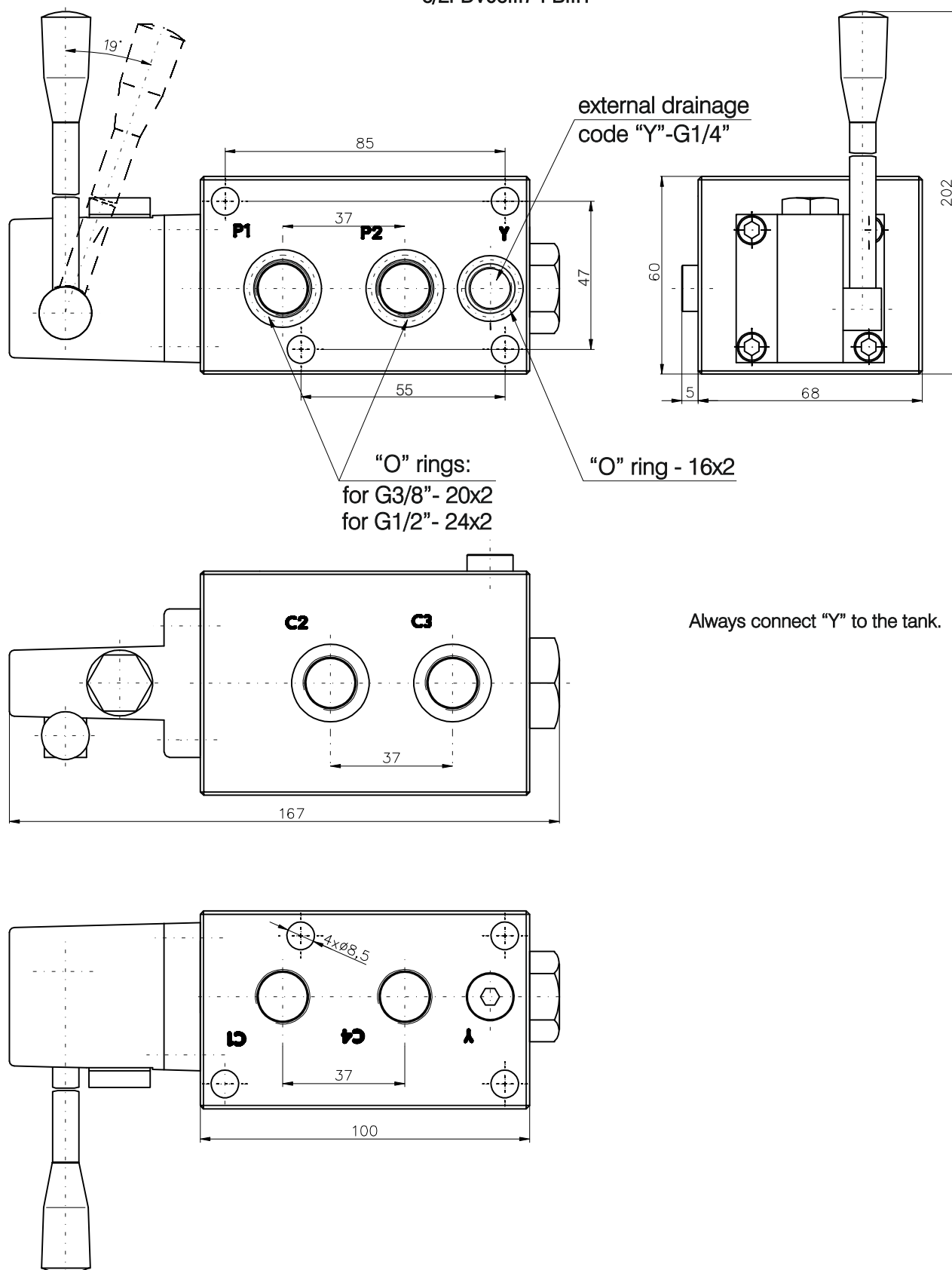
**CHARACTERISTICS**


For all directions:  
P1>C1 , P1>C2 , P2>C4 , P2>C3  
32cSt oil at 50°C

**DIMENSIONS**

All dimensions are shown in mm.

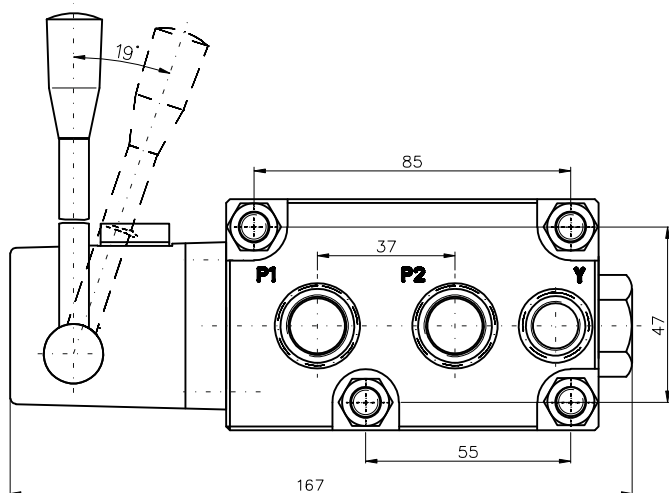
6/2FDV06...7-FB...Y



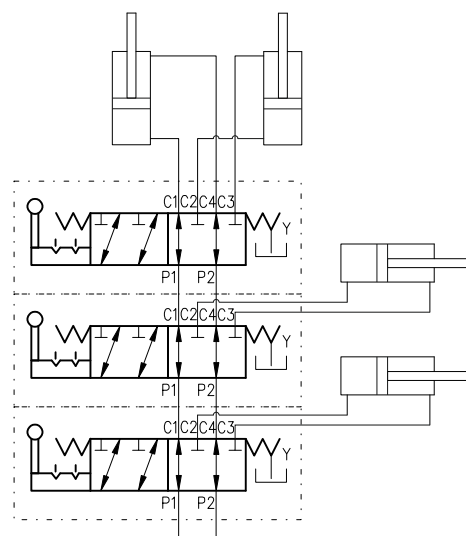
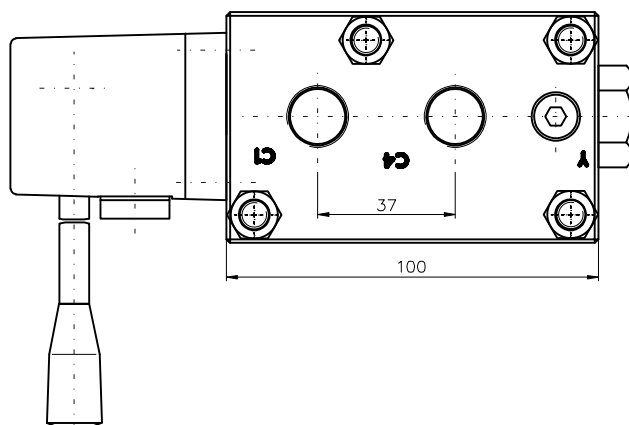
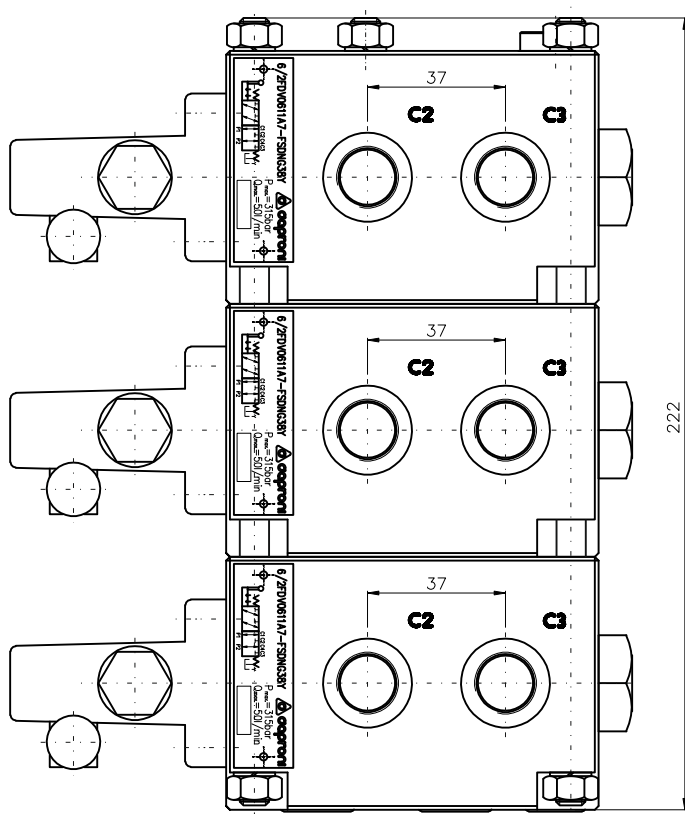
Always connect "Y" to the tank.

**ASSEMBLY**

All dimensions are shown in mm.



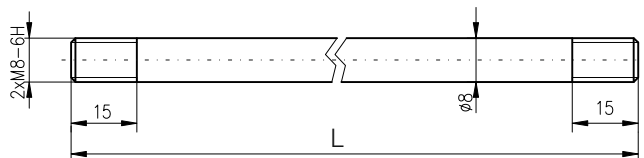
Here is shown 10-way valve  
(3 pieces of single valves)  
assembly for example:  
**3x6/2FDV0611A7-FBDNG38Y**



**ACCESSORIES**

**STUDS**

Studs: M8xL (4pcs per block).



Number of sections	L(mm)
For 2 sections	<b>135</b>
For 3 sections	<b>220</b>
For 4 sections	<b>286</b>
For 5 sections	<b>355</b>

**NUTS**

Nuts: M8 DIN934/8 (8pcs per block). **Tightening torque - 8...10Nm.**

**WASHERS**

Washers: Ø8 DIN7980 (8pcs per block).